

## o"KZ2009&10 'kgjh fodkl foHkkx dh Okkf"kd iz kkl fud fj i k&/

(i) The particulars of its organization, functions and duties.

### ifjp; %

fgekpy inSk ewr% ,d igkMh {ks= gS A ewHkr ljpukvka ds fodkl ds lFk vc 'kgjh {ks= rsth ls c<+ jga gS A o"KZ 2001 dh tux.kuk ds vuq kj fgekpy inSk dh tulq;k 60-77 yk[k g\$ ftlea ls 90- 79 ifr'kr xkeh.k g\$ rFk 9-21 ifr'kr 'kgjh {ks=ka ea jgrs g\$ A fiNys n'kd (1991&2001) ds nS ku 'kgjh tulq;k 31-31 ifr'kr c<h gS A Hkfo"; es bl of}de ds vSj rst gkus dh lEHkkouk ds ifj.kkeLo: lk vSj vf/kd xkeh.k {ks=k 'kgjka dh ifjHkk"kk ea lEefyr gk ldrs gS A bl ls LFkkuh; Lo'kkl u ds izkkl u ea ubZ pufkr; ka lkeus vk,xh A 'kgjhdj.k dh bl pufkr dk ,d deo} rFk leflor <x ls lkeuk djuk iMsk A vr% 'kgjh izkkl u dks lq<+,oa 0; ofLFkr djuk vko'; d gksk A

lfo/kku ds 74 oa ldkku }jk LFkkuh; Lo'kkl u lFkkuvka dks ljdkj ds rih; vx dk ntz fn;k x;k gS ftldk mns; fuEure Lrj lFkkuvka ea turU=k @ lRk dk vf/kdrj fodlnhdj.k djuk gS A vlrr% ;g jkT; ljdkj rFk LFkkuh; fudk;ka ds e/; fo"ka ds forj.k dh ijkdK"Bk Hkh gksch A

fgekpy inSk ea 'kgjh LFkkuh; fudk;ka ds ekxZ n'kZu rFk fu;U=k.k ds fy, 'kgjh fodkl foHkkx dk izkkl fud <kpk bl izdkj ls g\$

#### Lkfpoky; Lrj%

Ø Lkfpoky; Lrj ij 'kgjh fodkl foHkkx] lfo ¼'kgjh fodkl ½ ds iwz fu;U=k.k ea dk;Z dj jgk gS A

#### funs'kky; Lrj%

Ø funs'kky; Lrj ij 'kgjh fodkl funs'kky;] funskd ¼'kgjh fodkl ½ ds iwz fu;U=k.k ea dk;Z dj jgk gS A

funstky; dh Hkfedk %

LFkkuh; Lok; r foHkx dh dshh; ij "kn dh fl Qkfj 'kka ds vuq kj rFkk 'kgjh tulq; k dh c<ksjh dh iofr o foHkku ;kstukvka }kjk 'kgjh fodkl dks /;ku ea j[kra gq jkT; ljdkj us 'kgjh LFkkuh; fudk;ka ds funstky; ds xBu dk fu.kz nujs jkT; vFkkZr iatkc] gfj ;k.kk] vku/kkinSk] rkyukMw BR; kfn ds vk/kkj ij Qjoj 1986 ea fd;k x;k A 'kgjh fodkl funstky; dk dk;Z {ks=k fuEufyf[kr gS %

◆ fu;U=d (Regulator) ds : lk ea fuEufyf[kr dk;Z dk lpyu djuk %

1	'kgjh LFkkuh; fudk;ka dks fodkl dk;Z ds fy, vuqku nuks rFkk dk;Z; u ds fy, exZ n'ku djuk A
2	'kgjh LFkkuh; fudk;ka dk fu;r le; ij fujh{k.k djuk A
3	fu;eka ds vuq kj vuqkuka dk mi;ksx l'fuf'pr djuk A
4	y[kk&ijh{k rFkk ykd y[kk l'fuf'pr ds i;ka ds 'k?k lek/kku dk iz Ru djuk A
5	mi;ksx iek.k lk=kka dh fl'fuf'pr dks le;&le; ij tkp djuk A
6	de ykr l'Qbz ;kstuk dk dk;Z; u de ykr LoPNrk ;kstuk ds vUrZr 'kd 'kpy;ka dks gfk ls ikh Mky dj l'Qbz j[kus oks 'kpy;ka ea ifjofr djds e;ks <kus oks l'Qbz drkZka dks ml dk;Z ls eDr fnyokuk A
7	'kgjh LFkkuh; fudk;ka ds de;pkj;ka dh l'okvka l'ok l'EcU/kh v0; oLFk ea l'okj yuk A
8	'kgjh LFkkuh; fudk;ka ds vf/kfu;eka;eka;emifu;eka ea l'akku dh fl Qkfj 'k djuk A
9	'kgjh LFkkuh; fudk;ka dh dk;Z;gh dks fu;eka rFkk fofu;eka ds vuq lk fu;fer djuk A
10	'kgjh LFkkuh; fudk;ka ds forrh; ekeyka dk fuiVkj djuk A
11	ikfydkvka ds forrh; l'ku c<kus ds fy;s djka dh l'jpuk dh l'Q; oLFk djuk A
12	'kgjh LFkkuh; fudk;ka ds l'ok fuor de;pkj;ka ds i;ku ds ka dh Nkuchu ,oa i;ku Hkkrku vknsk tkjh djuk A

;g funstky; jkT; ljdkj dk dk;Z;gh vfhkdj.k gS A vr% ;g funstky; 'kgjh fudk;ka rFkk jkT; ljdkj ds chp ,d l'rq dh Hkfedk vfhkuh djrk gS A Hkkrh; l'fo/kku ds 74oa l'akku ds ifj.kkLo: i uxjikfydkvka dks cgr ls l'okvka] o;kd rFkk izklud mRkjk; Ro l'ks x;s gS A uxjikfydkvka dks mfpr exZ n'ku djus rFkk muds izklud dk;Z; oLFk dh n;ksj;ks ds fy;s fuEufyf[kr de;pkjh oxZ loDr gS fl dk izklud pVZ vuq/k \*^d\* ij gS %

(ii) The Powers and duties of its officers and employees

**Director (Urban Development) - Overall Administrative and Financial control of the department.**

**Addl. Director(Urban Development - To assist the Director(UD) in overall administration of Directorate and ULB's level and in the implementation of all planning/schemes/projects etc.**

**Joint Controller(F&A) - Overall control of Finance and accounts of department and to settle the pension/gratuity cases of retired employees of ULBs.**

**Executive Engineer(XEN) - Overall control, supervision and implementation of development works being carried out by the ULBs.**

(iii) The procedure followed in the decision making process including channels of supervision and accountability.

- ◆ **In the Directorate, the Director exercises the powers of the Head of Department. He is assisted by various officers of the Directorate in taking decisions/disposing of the normal workload of the department.**
- ◆ **The duties to the various officers are assigned by the Director keeping in view the expertise of the officers. The files move to the Director through the concerned officer for final decision.**

(iv) The norms set by it for the discharge of its functions.

- ◆ **The department follows the provisions contained in HPFR rules in all financial matters and other Government rules as adopted by the Government from time to time to deal with all administrative matters.**
- ◆ **The department conducts Periodic inspections and quarterly / Zonal meetings, conferences etc. with the ULBs to exercise effective control, direction and monitoring of their working at ULB's level. The grants to the ULBs is Linked with the submission of UCs of development works/schemes & realization of House tax etc.**

(v) The Rules, Regulations, instructions, manuals and records held by it or under its control

**The various Acts, rules, regulations and instructions are followed while functioning in different works and areas. A list in brief is as under:**

## Acts.

1. The H.P. Municipal Act, 1994
2. The H.P. Municipal Corporation, 1994
3. The H.P. Municipal Service Act, 1994

## Rules

1. H.P. Municipal Election Rules, 1994.
2. The Himachal Pradesh (Delimitation & Reservation of Wards) Rules, 1994.
3. The H.P. Municipal (Reservation and Election to the office of President & Vice-President) Rules, 1995.
4. The H.P. Municipal Corporation, Election Rules, 1996
5. The H.P. Municipal Corporation (Delimitation & Reservation of Wards) Rules, 1995.
6. The H.P. Municipal Corporation (Reservation and Election to the office of Mayor & Dy. Mayor) Rules, 1996
7. Himachal Pradesh Municipality Employees (Pension, Gratuity & General Provident Fund) Rules, 2000.
8. The R&P Rules for the different categories of Employees of Directorate and ULBs.
9. CCS & CCA Rules
10. HPFR & SR Rules
11. Medical re-imburement, General leave, Leave Travel Concession , House Building Advance and CCS Leave Rules

## Manuals

1. Office Manual
2. Budget Manual

(vi) A statement of the categories of the documents that are held by it or under its control.

This office has normally the following kinds of documents/files in respect of Directorate and ULBs :

- ◆ Annual Administrative Report, Account Code of ULBs and Development Works Document
- ◆ Files /documents relating to Directorate level
- ◆ Personnel Information & Service Matters viz. Continuance, increments, leave a/c etc
- ◆ Annual Plan, Budget Estimates, Budget allocation, Excess Surrender
- ◆ Court cases i.e. CWP, OA, Suites etc

- ◆ Vidhan Sabha matters and CAG, PAC Paras
- ◆ Files /documents relating to ULBs level
- ◆ Personnel Information, creation of posts, seniority fixation, transfer, extension etc.
- ◆ Annual Income & Expenditure information from own income & GIA, Utilization Certificates of development works under GIA,Schemes and projects etc.
- ◆ Taxes, Fees and Allocation of Shops & Stalls by ULBs.
- ◆ Court cases i.e. CWP, OA, Suites and files relating resolutions need approval from Directorate.
- ◆ Allocation & release of funds under various schemes to the ULBs Expenditure under various schemes. Physical & Financial Progress alongwith utilization certificates.

(vii) The particulars of any arrangement that exists for consultation with, or representation by, the members of public in relation to the formulation of its policy or administration thereof.

- ◆ A time bound Public Redressal System is available in the Department in each office and every level

(viii) A statement of the board, councils, committees and other bodies consisting of two or more persons constituted as its part or for the purpose of its advice, and as to whether meeting of those boards, councils, committees and other bodies are open to the public, or the minutes of such meeting are accessible for public.

- ◆ State Urban Development Agency(SUDA) - The Government of Himachal Pradesh vide its Notification No. UD-C(10)-8/97 dated 12<sup>th</sup> Feb,1998 has constituted State Urban Development Agency(SUDA) to supervise, review and monitor the implementation of Swarna Jayanti Shahari Rojgar Yojana being implemented in the Urban Towns of the Pradesh.

Following is the composition of this agency :

Secretary(UD) to the Govt. of Himachal Pradesh	:	Chairman
Secretary(Finance) to the Govt. of Himachal Pradesh or his representative.	:	Member
Secretary(Planning) to the Govt. of Himachal Pradesh or his representative.	:	Member

Secretary(Housing) to the Govt. of Himachal Pradesh or his representative.	:	Member
Advisor Planning, H.P.	:	Member
Director, Social Welfare, Himachal Pradesh	:	Member
Managing Director, Institutional Finance, Himachal Pradesh	:	Member
Director, SC/ST Development Corporation, Himachal Pradesh	:	Member
Two nominees of the Department of Urban Employment & Poverty Alleviation, Government of India.	:	Member
Secretary-cum-Chief Engineer, Himachal Pradesh Housing Board	:	Member
Director, Urban Development, Himachal Pradesh	:	Member Secretary - cum-Convenor

(ix) A directory of its officers and employees.

S. No.	Designation	New Pay Scale		No of post	Special allowance, if any.
		Pay Band	Grade Pay		
1	Director	IAS/HAS Cadre	--	1	
2	Additional /Joint/ Deputy Director	HAS Cadre	--	1	
3	Executive Engineer	15600-39100	7600	1	
4	Joint Controller(F&A)	15600-39100	6600	1	
5	Assistant Engineer	15600-39100	5400	1	
6	Project Officer.	10300-34800	5400	1	
7	Supdt. Grade-1.	10300-34800	5400	1	
8	Asstt. Town Planner	15600-34800	5400	1	
9	Jr. System Analyst-cum-Programmer	10300-34800	5400	1	
10	Personal Assistant	10300-34800	4200	1	(i) Spl. Allow. Rs. 300/- PM (ii) Conv. Allow. Rs. 200/- PM

11	Supdt. Grade- II.	10300-34800	4200	1	
12	Law Officer	10300-34800	4200	1	
13	Sr.Assistant	10300-34800	3800	4	
14	Junior Engineer	10300-34800	3800	2	
15	Statistical Assistant	10300-34800	3800	2	
16	Computer Operator	10300-34800	3200	1	
17	Jr. Scale Steno	5910-20200	2800	1	Spl. Allow. Rs. 100/- PM
18	Jr. Assistant /Clerk	5910-20200	2800/1900	10	
20	Driver	5910-20200	2000	3	(i) Spl. Allow. Rs. 300/- PM (ii)Uni. Allow. Rs. 170/- PM
21	Peon	4900-10680	1300	6	(i) Conv. Allow. Rs. 50/- PM (ii)Uni. Allow. Rs. 140/- PM
	<b>Total</b>			<b>41</b>	

- (x) The Monthly remuneration received by each of its officers and Employees including the system of compensation as provided in its regulations.

Sr. No	Name of Officer/Official	Designation	Total emoluments as on 31.03.2010 ( in Rs.)
1	Shri Rajneesh	Director	63,503/-
2	Dr.K.D.Lakhanpal	Addl. Director	63,353/-
3	Sh. Baldev Raj	Assistant Controller (Audit)	38,992/-
4	Sh. Padam Singh	Assistant Controller (Audit)	39,212/-
5	Sh. Mangat Ram	Assistant Engineer	40,997/-
6	Sh. Rattan Chand Thakur	Assistant Town Planner	40,382/-
7	Sh. Diwakar Kamal	Joint Controller (F&A)	42,002/-
8	Sh. Anil Sharma	S.O. (Audit)	28,313/-
9	Sh. M.R. Verma	Superintendent Gr. 1	40,173/-
10	Sh. Bheem Sen Thakur	Project Officer	39,090/-
11	Sh. P.K. Verma	Jr. System Analyst-cum-Programmer	33,810/-
12	Smt. Krishna Sud	Superinte ndent Gr. II	34,118/-
13	Smt. Anjana Sushil	Personal Assistant	23,494/-
14	Sh. Kanwar Singh Sharma	Law Officer	30,905/-
15	Sh. Deep Ram Pal	Sr. Assistant	28,400/-
16	Sh. Ramesh Sharma	Sr. Assistant	27,400/-
17	Sh. Moti Ram	Sr. Assistant	25,495/-
18	Sh. Amar	Sr. Assistant	21,282/-

19	Sh. Vijay Chauhan	Statistical Assistant	31,321/-
20	Sh. Rajendra Chauhan	Statistical Assistant	23,604/-
21	Sh. Vinod Kapoor	Junior Engineer	36,506/-
22	Smt. Niranjana	Computer Operator	21,253/-
23	Sh. Ravinder	Junior Auditor	26,409/-
24	Smt. Anuradha	Junior Auditor	35,109/-
25	Sh. Dharam Pal Sharma	Junior Assistant	17,854/-
26	Sh. Rajesh Chand	Junior Assistant	16,914/-
27	Sh. Govind Ram Thakur	Junior Assistant	16,514/-
28	Sh Ganga Ram	Junior Assistant	16,544/-
29	Smt. Champa Devi	Junior Assistant	17,002/-
30	Sh. Arvind Rana	Clerk	7,810/-
31	Sh. Mohan Lal	Clerk	13,727/-
32	Sh. Lok Raj	Clerk	11,266/-
33	Sh. Balvinder	Clerk	11,266/-
34	Sh. Naresh Kumar	Draughtsman	26,190/-
35	Sh. Prittam Singh	Driver	18,159/-
36	Sh. Mohan Lal Verma	Driver	7,910/-
37	Sh. Naresh	Driver	7,910/-
38	Sh. Yash Pal	Peon	10,821/-
39	Sh. Rakesh Rana	Peon	10,821/-
40	Sh. Sher Singh	Peon	12,775/-
41	Sh. Usha Negi	Peon	12,875/-
42	Sh. Hem Raj	Peon	11,929/-
43	Sh. Balwant	Peon	9,284/-

(xi) The budget allocated to each of its agency, indicating the particulars of all plans , proposed expenditure and reports on disbursements made

◆ SOE wise detail of budget allocated to this Directorate and actual expenditure incurred during the financial year 2009-10 is as under:-

Demand No. 28(Plan)				Rs. in lacs.	
Sr. No.	Major/Minor/Sub Head	Approved Outlay	Budget Sanctioned in supplementary demands for Grants.	Total Budget for 2009-10	Actual Expenditure
1	2	3	4	5	6
1	2217-Urban Development				
	03-Dev. Of Small & Medium Towns.				
	191-Assistance to Municipal Corporation				
	01-IDSMT(C50N)	0.0	0.0	0.0	0.0
	01-IDSMT(S50N)	0.00	0.00	0.00	0.00

	<b>192-Assistance to Municipalities/ Municipal Councils</b>				
	01-IDSMT(C48N)	0.00	0.00	0.00	0.00
	01-IDSMT(S32N)	0.00	0.00	0.00	0.00
	02-UIDSSMT (C80N)	0.01			
	02-UIDSSMT (S10N)	50.00		0.00	0.00
	<b>193-Assistance to Nagar Panchayats/ Notified Area Committees or equivalent thereof.</b>				
	01-IDSMT(C48N)	0.01		0.00	0.00
	01-IDSMT(S32N)	0.01		0.00	0.00
2	<b>2217-Urban Development</b>				
	<b>80-General</b>				
	<b>191-Assistance to Municipal Corporation</b>				
	04-SJSRY	0.99	0.00	0.00	0.00
	41-JNNURMS-(S-10N)	800.00	0.00	599.24	599.24
	41JNNURM (C-80N)	0.01	2203.31	2203.32	3576.47
	42-Mics grant.(Plan)	0.00	0.00	0.00	0.00
	<b>192-Assistance to Municipalities/ Municipal Councils</b>				
	04-SJSRY	3.00	0.00	0.26	0.26
	08-RGURF Scheme	90.00	0.00	99.73	99.73
	09-I.H.S.D.P (S-10N)	200.00	0.00	450.76	450.76
	09-IH.S.D.P (C-90N)	0.01	1058.21	1058.22	1058.22
	<b>193-Assistance to Nagar Panchayats/ Notified Area Committees or equivalent thereof.</b>				
	04-SJSRY	3.00	0.00	0.00	0.00
	08RGURF	53.00	0.00	50.00	50.00
	<b>4215- Capital outlay on water supply&amp;sewerage.</b>				
	<b>02-Sewerage &amp;Sanitation</b>				
	<b>106—Sewerage Services</b>				
	<b>02-Drainage sanitation Sewerage Schemes</b>				
	37- MAJOR WORKS(VOTED)	2400.00	0.00	2400.00	2400.00
	<b>4217- Capital outlay on urban Development</b>				
	<b>60-Other Urban development Schemes</b>				
	<b>789--SCSP</b>				
	02-SCSP(SOOS)	1200.00	0.00	1200.00	1200.00
	<b>37- MAJOR WORKS(SOOS)</b>				

Demand No. 28(Non-Plan)					
4	2217-Urban Development				
	80-General				
	001-Direction and Admn.				
	01-Directorate of UD.				
	01-Salary	162.99	0.00	142.91	142.91
	02-Wages	0.75	0.00	0.96	0.96
	03-Travels Exp.	1.32	0.00	0.85	0.85
	05-Office Exp.	10.29	5.00	16.49	16.49
	06-M.R.	4.59	0.00	3.55	3.55
	07-R.R.T	2.25	0.00	2.08	2.08
	12-PSS*	0.01	0.00	0.00	0.00
	30. Motor Vehicles	3.34	0.50	3.84	3.84
	64-Transfer Exp.	0.01	0.00	0.03	0.03
	Sub-Total:-	185.58	5.50	170.71	170.71
5	2217-Urban Development				
	80-General				
	191-Assistance to Municipal Corporation				
	01-SFC Award.	1287.08	0.00	1287.08	1287.08
	40-T.F.C.	0.00	0.00	0.00	0.00
	42- Misc. grant.	0.00	0.00	0.00	0.00
	192-Assistance to Municipalities/ Municipal Councils				
	01-SFC Award.	2024.97	0.00	2024.97	2024.97
	06-T.F.C	160.00	0.00	160.00	160.00
	193-Assistance to Nagar Panchayats/ Notified Area Committees or equivalent thereof.				
	01-SFC Award.	864.95	0.00	864.95	864.95
	07-T.F.C.	0.00	0.00	0.00	0.00
6	3054-Roads and Bridges				
	04-District and Other Roads.				
	105-Maintenance and Repair.				
	04-Maintenance of ULBs Roads .41-GIA	600.00	0.00	600.00	600.00
7	2059-Public Works				
	01-Office Building				
	053-Maintenance&Repair				
	95-Mtce. Of Urban Development Dept. Bldg.soon	0.01	0.00	0.00	0.00

8	6217-Loans for Urban development				
	60- other Urban development Scheme.				
	800- other loans				
	01- Interest free loan(SOON) State Schemes				
	48-Loans (VOTED)	0.00	0.00	0.00	0.00
9	2217-UrbanDevelopment				
	04-SlumArea Improvement				
	789-Scheduled caste sub plan				
	01EIUS/NSDP SOOS	12.00	0.00	12.00	12.00
	03 EIUS- SOOS	120.00	0.00	120.98	120.98
	04-EIUS-SOOS	112.00	0.00	112.00	112.00
	Total:-	244.00	0.00	244.98	244.98
Demand No. 19		(Rs. In lacs)			
10	2235-Social Security and Welfare				
	60-Other Social Security and Welfare Programme				
	200-Other programmes				
	11-Reimbursement of Medical Exp. Of Pensioners.	6.00	0.00	0.69	0.69

	Budget	Exp.
Central Plan	3261.54	4634.39
State Plan	3599.99	3599.99
Charged Exp. (SOOS)	0	0
Non-Plan	5107.71	5107.71

- (xii) The manner of execution of subsidy programmes, including the amounts allocated and the details of beneficiaries of such programmes
- ◆ **Not applicable as this office does not interact with public**
- (xiii) Particulars of recipients of concessions, permits or authorizations granted by it
- ◆ **Not applicable**
- (xiv) Details in respect of the information available to or held by it, reduced in an electronic form.
- ◆ **The Directorate has its website <http://hpurbandevlopment.nic.in> containing various information regarding this Directorate and its activities viz. organization structure, listing of ULBs, annual activities, functions, Status of various projects/schemes undertaken by the ULBs, budget, RTI info, pension scheme, municipal finance etc. The website is hosted and registered under NIC domain**
- (xv) The particulars of facilities available to citizens for obtaining information, including, the working hours of a library or reading room, if maintained for public use.
- ◆ **The public can have information from this office from 10.00AM to 5.00PM in 6 days a week except holidays.**
  - ◆ **The public / citizens can access the Website of the Department to acquire the information regarding Directorate, ULBs and their various activities. The efforts are made to keep the website updated on quarterly basis**
- (xvi) The designation and other particulars of the Public Information Officers.

I p̄uk dk vf/kdkj vf/kfu; e]2005 ¼d¼nh; vf/kfu; e l ¼; k 2005 dk 22¼dh /kkjk 5 vkj 19 dsvlr¼r 'kgjh fodkl foHkkx] fgekpy i n¼k }kjk foHkklu Lrjka ij fuEu i kf/kdkjh ukeks"V ¼designate¼fd; sx; sgS%&

I fpoky; Lrj ij%

vi hy i kf/kdkjh	%	lk/kku l fpo @ l fpo 'kgjh fodkl ] fgekpy i n¼k l jdkj A
Tku&l p̄uk vf/kdkjh	%	Lk; Ør @ mi &l fpo ¼kgjh fodkl ½fgekpy i n¼k l jdkj A
l gk; d tu&l p̄uk vf/kdkjh	%	vut¼kkx vf/kdkjh@ v/kh¼kd ¼kgjh fodkl ½

		fgekpy i n s k l j d k j A
--	--	----------------------------

fun s k k y ; L r j i j %

vi hy i k f / k d k j h	%	fun s k d ] ' k g j h f o d k l ] f g e k p y i n s k A
T k u & l p u k v f / k d k j h	%	mi @ l a p r @ v f r f j D r fun s k d ¼ k g j h f o d k l ½ f g e k p y i n s k A
l g k ; d t u & l p u k v f / k d k j h	%	v f / k { k d x M & A

U k x j f u x e L r j i j %

vi hy i k f / k d k j h	%	v k ; p r ] u x j f u x e ] f ' k e y k A
T k u & l p u k v f / k d k j h	%	l k g k ; d @ l i ; p r v k ; p r ] u x j f u x e ] f ' k e y k A
l g k ; d t u & l p u k v f / k d k j h	%	v f / k { k d x M & A ( s u p e r i n t e n d e n t G e n e r a l )

' k g j h L F k k u h ; f u d k ; L r j i j ( M u n i c i p a l i t y L e v e l )

vi hy i k f / k d k j h	%	L k E c f U / k r l c M f o t u y v f / k d k j h ¼ l f o y ½ A
T k u & l p u k v f / k d k j h	%	d k ; z k j h v f / k d k j h @ l f p o A
l g k ; d t u & l p u k v f / k d k j h	%	d f u " B v f l k ; U r k ¼ l f o y ½ A

(xvii) Other information:

- ◆ e k x z n ' k z d ( F a c i l i t a t o r ) d s : l k e a d b n h ; @ j k T ; @ L o k ; r L k a F k k u k a } k j k i k ; k s t r ' k g j h f o d k l ; k s t u k v k a d k i k ; i . k r F k k d k ; D o ; u A
- d b n h ; i k ; k s t r ; k s t u k , a %

d	Lo . k z T k ; U r h ' k g j h j k s t x k j ; k s t u k A
[ k	N k s / s r F k k e ? ; e ' k g j h l j p u k f o d k l ; k s t u k ¼ v k b D M h o , l o , e o v h o ½ A
x	, d h d r v k o k l , o a e f y u c f l r f o d k l ; k s t u k ( I H S D P )
? k	T o k g j y k y u g : j k f " V z ; ' k g j h u o h u h d j . k ; k s t u k A

jkT; ik; kstr ; kst uk, a%

d	de ykxr LoPNrk ; kst uk A
[k	bDvkbD; @, I A
x	jktho xkdkh 'kgjh uohudj .k I qo/kk A
	'kgjh {kskkaeal Mdkadk j [k*] [kko A
p	'kgjh {kskkaeey fudkl h ; kst ukA

Lok; r l a.Fkku&ik; kstr ; kst uk, %

& 'kkl; &

dbnh; I jdkj @ jkT; I jdkj }kjk ik; kstr ; kst uk, %

'kgjh fodkl foHkx }kjk 'kgjh {kskkaeai zqk fuEu dbnh; @ jkT; ik; kstr ; kst ukvka dk I pkyu fd; k tk jgk g%

1/d 1/2	Nks/srFkk e?; e 'kgjh I j puk fodkl ; kst uk 1/4 @vkbDMhO, I O, eOVhO 1/2 A
1/4 [k 1/2	Lo.kZt; Urh 'kgjh jkst xkj ; kst uk
1/4 x 1/2	'kgjh eyhu cLr lk; kbj .k I qkkj ; kst uk 1/4 bZvkbZ; w, I 1/2
1/4 k 1/2	, dhdr vkokl , oaefyu cLrh fodkl dk; Zde (IHDP)
1/4 M 1/2	jktho xkdkh 'kgjh uohudj .k QfI fyV A
1/4 p 1/2	Tokgj yky usg: jk"Vh; 'kgjh uohudj .k ; kst uk A
1/4 N 1/2	'kgjh {kskkaeal Mdkadk j [k*] [kko A
1/4 t 1/2	'kgjh {kskkaeey fudkl h ; kst ukA

foRrh; o"KZ2006&07 I s dlnz I jdkj }kjk ; 0vkbD, I 0, I 0, eOVhO (UIDSSMT) uke I s ubZ ; kst uk vkj EHK dh xbZ bl ; kst uk dk eq[ ; mnns ; Nk&srFkk e? ; e Js kh dsuxjkaea I j pUKRed I fo/kk/kkaea I qkkj ykuk vkj LFkkbZ I koZtfud I Ei nk dh mRi fr ea I gk ; rk dj 'kgjh LFkkuh ; fudk ; dh vk ; ea<ksrjh dj uk gS ft I I s 'kgjh LFkkuh ; fudk ; ka dh foRrh ; fLFkfr I q[ gks I dsA o"KZ2007&08 ea/keZ kkyk] e.Mh o gehj i j dksbl ; kst uk dsvUrXZ yk ; k x ; k gA bl ; kst uk dsvUrXZ dlnh ; I jdkj] jkT ; I jdkj o 'kgjh LFkkuh ; fudk ; ea foRrh ; Hkxhnhkj 80% 0% 0 dh gS vkj ; g ; kst uk jkT ; dsfy, cgr ykHknk ; d gSA

jkT ; I jdkj }kjk bl ; kst uk dsdk ; kzo ; u grw fgeMk dksukMy , tSI h cuk ; k x ; k gSA foRrh ; o"KZ2009&10 eadkbZ Hk /ku jkf'k dlnz I jdkj I s Lohdr ugh gZgSA

**UPTO-DATE POSITION OF THE FUNDS RELEASED FOR THE WORKS UNDER UIDSSMT (urban infrastructure development scheme for small and medium towns) IS AS UNDER:-**

(Rs. in lacs)

S. No	Name of Town	Name of Project/Work	Project Cost submitted to GOI	Project Cost Approved	Sharing pattern			Funds Released		Total Funds released
					Central Share	State Share	Implementing agency share	Central Share	State Share	
1	2	3	4	5	6	7	8	9	10	11
1.	MC Dharamsala	Channelisation of Nallahs in Town	190.18	190.18	152.14	15.214	15.214	78.93	19.02	97.95
2.	MC Hamirpur	Storm water drain, rehabilitation of soil erosion ,prevention of water bodies and widening of narrow streets/paths/ roads	1234.65	1234.65	987.72	98.772	98.772	224.25	123.00	347.25
3.	MC Mandi	Construction of roads & paths and channelisation of Nallahs	1658.80	1281.58	1025.26	102.526	102.526	531.86	127.98	659.84
		<b>Total</b>	<b>3083.63</b>	<b>2706.41</b>	<b>2165.12</b>	<b>216.512</b>	<b>216.512</b>	<b>835.04</b>	<b>270.00</b>	<b>1105.04</b>

- ◆ 1/4 k 1/2 Lo.kz Tk; Urh 'kgjh jkst xkj ; kst uk& Hkjr I jdkj }kjk 30-11-1997  
rd I pkyr ug: jkst xkj ; kst uk] ; 0ch0, I 0i h0 rFkk i h0, e0vkbD; 0i h0bDi h0 ; kst ukvka dks , dhdr dj 1-12-1997 I s dN u ; s dk ; Zdyki kadks 'kkfey dj rsgq Lo.kz Tk; arh 'kgjh jkst xkj ; kst uk vkj EHK dh xbZ A bl ; kst uk dk mnns ; uxjh ; {ksk dsfu/kZu cj kst xkj ka vFkok vkf'kd cj kst xkj 0; fDr; ka dks Loj kst xkj m | e vFkok etnijh jkst xkj ds ek? ; e I s

Lojst xkj mi yC/k djuk vksj bl dsl kFk&l kFk l keqkf; d l Ei fr; kadk l `tu  
djuk Hkh gSA ; g ; kst uk eq; r%fu/kzu l enk; dksl 'kDr cukdj mlgs fu; kst u  
vksj vuqJo.k dh ifdz k l stksMusdsmns; ij vk/kkfjr gSA bl ; kst uk ea  
l keqkf; d fodkl l febr ¼ h-Mh-, l -½dksdlnzfcUngeku dj mlgh dsek?; e l s  
ykhkkfFk; ka dk p; u] i fj; kst uk dk p; u] i kFkZuk lk=ka dks r\$ kj djuk rFkk  
ol wgh dk vuq j .k fd; k tk jgk gSA bl ; kst uk esfu/kzu efgykvkads l exz, oa  
l okzh.k fodkl , oamuds l n<hdj.k djus grw l keft d l 'kDrhdj.k , oa  
efgyk l egka dh l ghkkfxrk dks l k&l kfr djrs gq efgykvka dks ykhkkflor  
fd; k tkrk g\$ l kFk gh vuq wpr tkfr] tutkfr rFkk fodykaka ds fodkl ds  
l e/k eaHkh fo'kSk cy fn; k tkrk gSA bl ; kst uk ea dlnz, oajkT; l jdkj dk  
foRr i kSk.k dæ'k%90%10 eki n.M vuq kj fu?kkZjr fd; k x; k gSA Lo.kZTk; arh  
'kgjh jkst xkj ; kst uk ea eq; : i l s fuEu mi ; kst uk; al fEefyr dh x; h gS  
A

'kgjh Lojst xkj dk; Zde ¼ q, l -bzi h-½& ; kst uk raxr 0; fDrxr ykhkkfFkz ka  
dks e@ 200000 : 0 rd dh ykxr dh i fj; kst uk LFkfi r djus grq ykxr dk  
25 i fr'kr vf/kdre e@ 50000 : 0 rd dk vuqku mi yC/k dj; k tkrk gS, oa  
i fj; kst uk ykxr dk 5 i fr'kr ykhkkfFkz valknku gksrk gSA i fj; kst uk LFkfi r  
djus grq vo'kSk /kujkf'k \_\_.k ds: lk eajk"Vh; dr c&karFkk l gdkjh c&ks l s  
mi yC/k dj; h tkrh gSA bl foRrh; o"kZ 2009&2010 ea 33 ykhkkfFkz ka dks  
ykhkkflor fd; k x; k gA

'kgjh {ks-ka ea efgyk , oack y fodkl ¼Mokd q/k½& 'kgjh fu/kzu efgykvka  
ds Lo; a l gk; rk l eg cukdj muea cpr dh vknr Mkyus ds l kFk & l kFk  
l kefgd : i l sm | e yxkus grq i fj r , oa l {ke cuk; k tkrk gSA rRi 'pkr  
m | e grq i fj; kst uk ds vk/kkj ij i fj; kst uk ykxr dk 35 i fr'kr vf/kdre e@  
300000 yk[k : i ; sdk vuqku mi yC/k dj; k tkrk gSA i fj; kst uk ykxr dh  
vo'kSk /kujkf'k j k"Vh; dr c&ks l s \_\_.k dsek/; e l smi yC/k dj; h tkrh gSA  
c&ka }kj k l keku; C; kt nj fy; k tkrk gSA

Lojst xkj i f' k{k.k dk; Zde& 'kgjh fu/kzu ka dks Lor-% jkst xkj , oajkst xkj grq  
l {ke cukus ds fy, i f' k{k.k dk; Zde pyk; s tk jgs gSA dks y of} grq bl

if'k{k.k dk; Zde ea e@ 10000@& : 0 ifr ykHkkFkhZ0; ; fd; k tkrk gSA bl o"kZ  
2009&2010 ea170 if'k{k.k.kkFkZ kadksykhkkfUor fd; k x; k gA

\_\_k cpr l eng 1/4FkQV , .M dFMV l kd k; Vh/1/2& 'kgjh fu/kZ i fjokjkaea  
vkfFkZd l {kerk ykus, oamlgs l m [kkj ka l scpkusgrqfu/kZ efgykvaadks \_\_.k  
cpr l eng cukusgrqi fjr fd; k tkrk gSA bl ; kstuk ea; fn efgyk l eng , d  
o"kZ rd cpr djrk gS rks mlgs o"kZ dh l ekfir ij e@ 2000 : 0 ifr ykHkkFkhZ  
vf/kdre e@ 25000 : 0 fjokfYoax Q.M ds: i eami yC/k dj; k tkrk gSA

'kgjh etnijh jkstxkj dk; Zde 1/4, WVCywbZi h-1/2& bl ; kstuk ea 'kgjh  
LFkkuh; fudk; kadh l hek ds vUrxZr xjhch j s [kk dsuhps thou ; ki u djusokys  
0; fDr; ka dks etnijh ds ek; e l s jkstxkj mi yC/k djkrsgq l kekftd , oa  
vkfFkZd : i l sykhkdkjh l koZt fud l Ei fRr; ka dk fuekZ k fd; k tkrk gSA 1991  
dh tux.kuk ds vuq kj 5-00 yk [k dh tul a; ; k l s de okyh LFkkuh; fudk; kaea  
; g ; kstuk ykxwdh x; h gSA dk; Zde ea l kexh rFkk etnijh dk fu/kkZ .k 60%0 ea  
gSA U; ure etnijh dh nj kadk fu/kkZ .k l e; & l e; ij i R; d {ksk dsfy, fd; k  
tkrk gSA rFkk ml h ds vuq kj gh ykHkkFkhZ dks bl dk; Zde ds vUrxZr Hkqrku  
fd; k tkrk gSA ; kstuk ea l h-Mh-, l -}j k l oZk.k ds vk/kkj ij vi us {ksk ds  
vk/kkj Hkur U; ure l okvka dh l ph rS kj dh tkrh gS rFkk l oZ Fke xS ekst m  
c fu; knh U; ure l okvka dh i gpku dh tkrh gS ml ds ckn vl; vko' ; d ekfyd  
l fo/kkvka dks l pho} fd; k tkrk gSA bl ds vUrxZr mi yC/k /kujkf'k l s; Fkk  
l EHko vko' ; drkvkaadksi wkZ djusdk iz kl fd; k tkrk gSA

◆ 1/2 1/2 bz-vkbZ ; w , l %- 'kgjh {kskka es eyhu cflR; ka ea jgus oky ka dh c<rh  
l eL; k f}rh; i po"khZ ; kstuk l sgh dlnz l jdkj dk /; ku vkdf"kr djrh vk  
jgh Fkh A i kj fEHkd voLFkk ea l qkkj dh uhfr cukbzxbzftl dk eq; mnns;  
eyhu cflR; kadks l kQ djuk vkSj eyhu cflR; kadksfuokfl ; kadksu; sfodfl r  
{ksk} ftl ea U; ure eyHkur l fo/kk, agks ea i qokZ djokuk Fkh A bl uhfr dks  
dk; Zlor djus ds fy, 1956 ea eyhu cLrh l qkkj dk; Zde 'kq fd; k x; k A  
i jUrq; g Hkh egl w fd; k x; k fd bl ; kstuk ds vUrxZr lk; kZr l fo/kkvka dk  
i ko/kku ugh gks l drk D; ksd eyhu cflR; kadh tul a; ; k cgr rsth l sc< jgh  
Fkh vkSj mudsi qokZ grqvfrfj DRk Hkrie vkSj ml dks fodfl r djusdk 0; ; cgr

vf/kd Fkk A i fj .kkLo: lk l u 1972 eæefyu cfLr; kadsfuokfl ; kadksubzHkrie i j  
i uokZ djokus dk dk; ðæ cln dj fn; k x; k rFkk 'kgjh efyu cfLr; ka ea  
lk; kbj .kh; l qkkj (Eius) ; kst uk vkj Hhk dh xbZA

'kgjh eyhu cfLr; kadslk; kbj .kh; l qkkj Ldhe l svfHki k;  
gSfd de l sde fuEu vk/kkj Hkar l ok, ami yC/k djok dj eyhu cfLr; ka eaj gus  
okyksdsjgu&l gu eal qkkj fd; k tk, %&

1	tyki firz	150 dh tul q; k i j , d uy
2	ey fudkl ukyh	ty l p; u dksj kadusdsfy, [kqyh ukfy; kadk fuekZ k A
3	cj l krh i kuh dh ukfy; ka	o"kkZ ty dh 'kh/kzfudkl h gsrq
4	l kepkf; d Luku?kj	20 l s50 0; fDr; kadsfy, , d Luku?kj A
5	l kepk; d 'kkpky;	20 l s50 0; fDr; kadsfy, , d 'kkpky; A
6	xfy; ka dks pkB/k djuk rFkk [kMat k fcNkuk A	dhpM bR; kfn l scpko dsfy, i Dds j kLrka dk fuekZ k djuk ft l l si šny pyusokyk l kbZdy okykar Fkk j gMh okykadksl qo/kk gksA
7	i Fk i zdk'k A	30 ehVj dh njh i j , d [kEHkk A

'kgjh eyhu cfLr; kadslk; kbj .kh; l qkkj Ldhe dk dk; Z{kæ  
1974 eac<kdj bl Ldhe dksU; ure vko'; drk ; kst uk dk vkarfjd Hkx cuk  
fn; k x; k rFkk j kT; l jdkjka dks LFkkUurfjr dj fn; k x; k A 'kgjh eyhu  
cfLr; ka ds lk; kbj .kh; l qkkj Ldhe vuq firp tkfr fo'kšk ?kVd ; kst uk ds  
vlrxr dk; ðlor dh tk jgh gSA 01-04-1995¼vkBoh ; kst uk dk prfko"kz½ l s  
bl ; kst uk dsvlrxr i fr 0; fDr dks l gk; rk jkf'k 800@&: i ; adh nj l s0; ;  
dh tk l drh gSA

bl foRrh; o"kz 2009&10 eæe@ 244-98 yk[k : lk; sdh /kujkf'k  
'kgjh LFkkuh; fudk; kadks tkjh dh xbZgSft l dk foj .k vuqU/k \*\*[k" i j fn; k  
x; k gSA

- ◆ ¼k½ , dhdr vkokl , oa eyhu cLrh fodkl dk; ðæ  
¼vkbD, p0, l OMho i ho½ - ckfYedh vEcndj eyhu cLrh vkokl  
; kst uk (VAMBAY) vkš jk"Vh; eyhu cfLr fodkl dk; ðæ  
¼ u0, l OMho i ho½ dk feJ .k gš ft l ea Hkkjr l jdkj vkš j kT; l jdkj ds

e/; 90%0 dh Hkkxhnhkj gSrFkk i R; sd vkokl h; bZkbZdh vf/kdre ykxr 90 gTj : 0 j [kh xbZgSA bl ; kst uk dk eq; vfhki k; eyhu cfLR; kaee jgusokykaf tudsiki lk; kZr vkJ; ugh gS; k tksVW/s QV/svkJ; kaee jgrs gSdsfy, lk; kZr vkJ; mi yC/k djokuk gSA bl foRrh; o"lz eabl ; kst uk ds vLrxr e@ 1044.22 yk[k : l; sdhHkkx rFkk 450-76 yk[k : l; sjkT; Hkkx ds: i ea3 'kgjkade' k%ukyKx<] ijok.kq, oanon dh kst tkjh dh xbZA vc rd vuqfnr i kst DVkadk foj .k vuqU/k \*\*x\*\* ij gSA

- ◆ ¼M-½ jk tho xkalkh 'kgjh uohudj .k QfI fyVh %& f'keyk 'kgj dksNkMdj nh jh 'kgjh LFkkuh; fudk; kaeeal QkbZ, oa<kpkxr l qkkj graqk tho xkalkh 'kgjh uohudj .k QfI fyV ; kst uk o"lz2006&07 l spykbZ tk jgh gSA bl ; kst uk dk for i ksk.k jkT; l jdkj rFkk 'kgjh LFkkuh; fudk; ka eade' k%95% dk gSA bl ; kst uk ds vLrxr bl foRrh; o"lz eafuEu 'kgjh LFkkuh; fudk; ka dks e@ 149.73 yk[k : lk; sdh /ku jkf'k i nku dh xbZft l dk foj .k fuEu izdkj l sg %&

(Rs. In lacs)

Sr. No	Name of ULB	Name of Work	Amount Released (Rs. In lacs)
1	N.P. Santokhgarh	Development of Park	10.00
2	M.C. Una	Parking	60.00
3	M.C. Solan	Transport Nagar Parking	8.00
4	N.P. Sarkaghat	Development of 2 Parks (Rs.20 lacs each)	40.00
5	M.C. Nurpur	Development of Park	20.00
6	M.C. Mandi	For construction of toilets	11.72666
	<b>Total</b>		<b>149.72666</b>

- ¼p½ tokgyky ug: jk"Vh; 'kgjh uohudj .k ; kst uk %& ekuuh; izkku eakh th us3 fnl Ecj]2005 dks tokgyky ug: jk"Vh; 'kgjh uohudj .k ; kst uk dh ?kSk.kk dh Fkh A bl ; kst uk dk y{; 'kgjksdk , dhdr : lk l s fofHkuu eyHkur l j pukvka dk fodkl ] xjhckadsfy, eyHkur l fo/kk, ai nku dj uk rFkk fofHkuu 'kgjh l LFkkvka dks l 'kDr djuk , oa mudh dk; i z kkyh ea l qkkj ykus graq 'kgjks dks fodfl r djuk gSA Hkkjr l jdkj }jkj bl ; kst uk ds vLrxr dpy f'keyk 'kgj

dkjkt/kkuh gkus ds ukrs 'kkfey fd; k x; k gSA bl ; kst uk ds vUrxZ foRrh; Hkkxhnhkj Hkkjr I jdkj] jkT; I jdkj o uxj fuxe ea dæ'k%80%0%0 dh gSA fgekpy insk I jdkj }kjk vkokl rFkk 'kgjh fodkl i kf/kdj .k ¼ge¼k½ dks bl ; kst uk ds dk; ¼o; u gsrq ukM y , t ¼/ h ukekfidr fd; k x; k gSA bl ; kst uk ds vUrxZ e[; r%I Mdkadk fodkl ] tyki fir] eyfudkl h] i kf d[ ] I gaxarFkk d¼k i dU/ku bR; kfn dsdk; Z I fefyr gðA bl foRrh; o"z2009-10 e[ 3341.10 yk[k : lk; s( d¼nh; Hkkx) rFkk e[ 407.82 yk[k : lk; s( jkT; Hkkx ) ds: i eavkgfjr fd; s x; A

♦ vc rd vuqfknr i kst DVkadk foj .k vuqU/k \*\*?k\*\* i j gSA

♦ ¼N ½ 'kgjh {ks-ksseal Mdkadk j [k&j [kko A

o"z 2006&07 ea ; g ; kst uk vkjEHk dh xbZ Fkh D; kf d 'kgjh {ks-ksks ea I Mdkk xfy; ka rFkk jkLrka dk I gh j [k&j [kko vfr vko'; d gSA bl foRrh; o"z ea I Hkh 'kgjh LFkkuh; fudk; ka dks I Mdkk xfy; ka rFkk jkLrka ds j [k&j [kko ds fy, e[ 6-00 dj kM : lk; svuqku ds: lk ea i nku fd, x; s¼vuqU/k ¼M¼A

♦ ¼t ½ 'kgjh {ks-ksseay ey fudkl h ; kst ukA

o"z 2009&10 ea 'kgjh {ks-ksks ea ey fudkl h ; kst uk I jdkj }kjk fl pkbZ , oe tu LokLFk; foHkkx I s'kgjh fodkl foHkkx dks LFkkukrfjr dh xbA Since the Urban Local Bodies are not having the technical know how about the sewerage Projects, therefore, the execution of Sewerage scheme are still with the I&PH Department. Hence, funds to the tune of Rs. 3600.00 Lac drawn ( Rs.3114.21 lacs placed at the disposal of I&PH Deptt. and Rs.485.79 lacs released to the concerned ULBs for connectivity) as detailed below:-

(Rs. In lacs)

Sr. No	Name of Town	Funds released to I& PH Deptt	Funds released to ULBs for connectivity	Total
1.	Theog	90.00	0	90.00
2.	Jubbal	63.37	0	63.37

3.	Kotkhai	48.50	0	48.50
4.	Suni	20.40	0	20.40
5.	Rohroo	18.12	0	18.12
6.	Paonta	135.00	0	135.00
7.	Solan	450.00	0	450.00
8.	Kangra	275.00	0	275.00
9.	Nurpur	189.00	0	189.00
10.	Dharamsala	55.00	0	55.00
11.	Nagrota Bagwan	40.00	0	40.00
12.	Dehra	170.00	0	170.00
13.	Mandi	21.71	80.34	102.05
14.	Sundernagar	200.00	0.00	200.00
15.	Jogindernagar	0.52	100.45	100.97
16.	Sarkaghat	227.59	0	227.59
17.	Santokhgarh	115.00	0	115.00
18.	Mehatpur	80.00	0	80.00
19.	Hamirpur	100.00	245.00	345.00
20.	Sujanpur	190.00	0	190.00
21.	Nadaun	135.00	0	135.00
22.	Kullu	0	60.00	60.00
23.	Bhunter	55.00	0	55.00
24.	Chamba	170.00	0	170.00
25.	Dalhousie	50.00	0	50.00
26.	Chowari	65.00	0	65.00
27.	Jubbal (Rural)	50.00	0	50.00
28.	Kunihar(Rural)	100.00	0	100.00
<b>Total</b>		<b>3114.21</b>	<b>485.79</b>	<b>3600.00</b>

bl dsvfrfjDr I hojst Ldhekads tehu fookn dsepykots  
grq U; k; ky; ds vkn'skkud kj e@ 8]08]000@& foHkkx dks charged  
expendi ture ds: lk ea tkjhfd, x, A

, I 0, Q0I h xka/ %

'kgjh LFkkuh; fudk; ks dks vupku ckj's r'rh; jkT; foRrk; ksx dh fl Qkfj 'ks  
lk=k I a; k ; @Mh0&, p% h0%1%1%&1@2006 fnukad 17-05-2008 }kjk ifjpkfy dh xbz  
gSA r'rh; jkT; foRrk; ksx }kjk tkjh fl Qkfj 'kka ea ukxfjd I fo/kk'vka dsfy, vupku]  
i R; k; k'f' tr dk; k; ifj I Eifr dsj [kj [kko] fuok'pr i fruf/k; ka dks ekuns ] dk; ky;  
0; ; ] vk; vk; 0; ; dschp vlrjky Hkj .k vupku I fefyr gSA

The norms prescribed by third SFC for the maintenance as under:-

1	Roads	Rs.30,800/- per Km
---	-------	--------------------

2	Streets	Rs.10,250/-per Km
3	Drains	Rs.7,650/- per Km
4	Toilets	Rs. 2,050 /-per Unit
5	Street Light	Rs. 300 per Point
6	Office Buildings	Rs. 50/- per sq.mtr. of the area..
7	Parks	Rs. 20/- per sq.mtr. of the area..

Since the above norms have been prescribed for the year 2007-08, (base year) therefore, 10% increase is permissible annually to cater the increased costs of inputs for maintenance and the increase in wages etc.

bl forrh; o"lzea e@ 4177 yk[k : lk; sdh jkf'k 'kgjh LFkkuh; fudk; kadks tkjh dh xbzgSft l dk fooj .k vuqU/k \*\*p”

**Vh, Q-1 h xka/ 1/2 oafork; kx dh xka/1%**

12oafork; kx usdMk&dpjk i zU/ku l a =k LFkfi r djusi j fo'kSk cy fn; k gA bl forrh; o"lzea 12oafork; kx vokMZdsVlrxr e@ 1-60 djKM : i ; s dh /ku jkf'k dMk dpjk i zU/ku l a =k dsfy, ] fuEu 'kgjh LFkkuh; fudk; kadks i nku dh xb%&

Sr. No	Name of Municipality	Rs. (In lac)
1	Ghumarwin	90.00
2	Mandi	70.00
<b>Total:-</b>		<b>160.00</b>

**vYi l a; dkadk dY; k. k %**

i k; %; g n[kuseavk; k gSfd vYi l a; dkadsdY; k.k dh Ldhek@ dk; Zdeka dsdk; D; grq'kgjh LFkkuh; fudk; kadks i kl vYi l a; dkads2001 dh tux.kuk ds vuq kj vkadMsmi yC/k ugh gA vr%vYi l a; dkadsdY; k.k dh Ldhek@ dk; Zdeka dks dkjxj : lk l sdk; D; u grq2001 dh tux.kuk ds vuq kj vYi l a; dkads vkadMa vuqU/k \*\*N^\*ij n'kkz, x, gA

**ikdfrd vkin k dsVlrxr l gk; rk%&**

; |fi ikdfrd vkin k dsVlrxr dk; kad ds th.kk) kj grq l gk; rk vuqku l EcfU/kr mik; D(rka) kjk i nku dh tkrh g\$ i jUrqb l o"lzea@ 200-00 yk[k : lk; s l h/ks

e. Myh; vk; Þr] f'keyk l sHh c&d MkQV ) kjk bl funðkky; dks i klr gq Fks tksfd  
l Hkh 'kgjh LFkkuh; fudk; kaðksforfjr fd, x; sgS/vuqU/k \*\*t\*½ A

### uxj i kfydk deþkfj; kaðksi Þ'ku

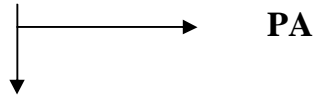
fgekpy inðk uxj i kfydk l ok; a vf/kfu; e 1994 ea uxj i kfydk ds 1-4-  
1992 l s l ok fuor deþkfj; ka; k l ok fuor gkus okys deþkfj; ka dks i Þ'ku @ l ok  
fuor dsykhk dk i ko/kku fd; k x; k gSA fgekpy inðk l jdkj usuxj i kfydk l okvka  
dksvf/kd vkd"kd cukusdsvi usvk'okl u dks i yk fd; k gS A funðkd 'kgjh LFkkuh;  
fudk; kaðks i s ku rFkk xB; w/h inku djus dk nkf; Ro l kS k x; k gS A 01-04-  
2009 l s31-03-2010 rd 60 deþkfj; kaðsk{k ea i Þ'ku o xB; w/h Hkqrku dsvknðk  
tkjh fd; sx, rFkk 21 deþkfj; kaðsk{k esdE; w/s ku Hkqrku dsvknðk Hkh tkjh fd; sx; s  
A

\*\*\*

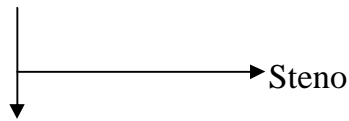
# Administrative Chart of the Directorate Urban Development

vucd/k & d^

**Director**



**Addl./Joint/Deputy Director**

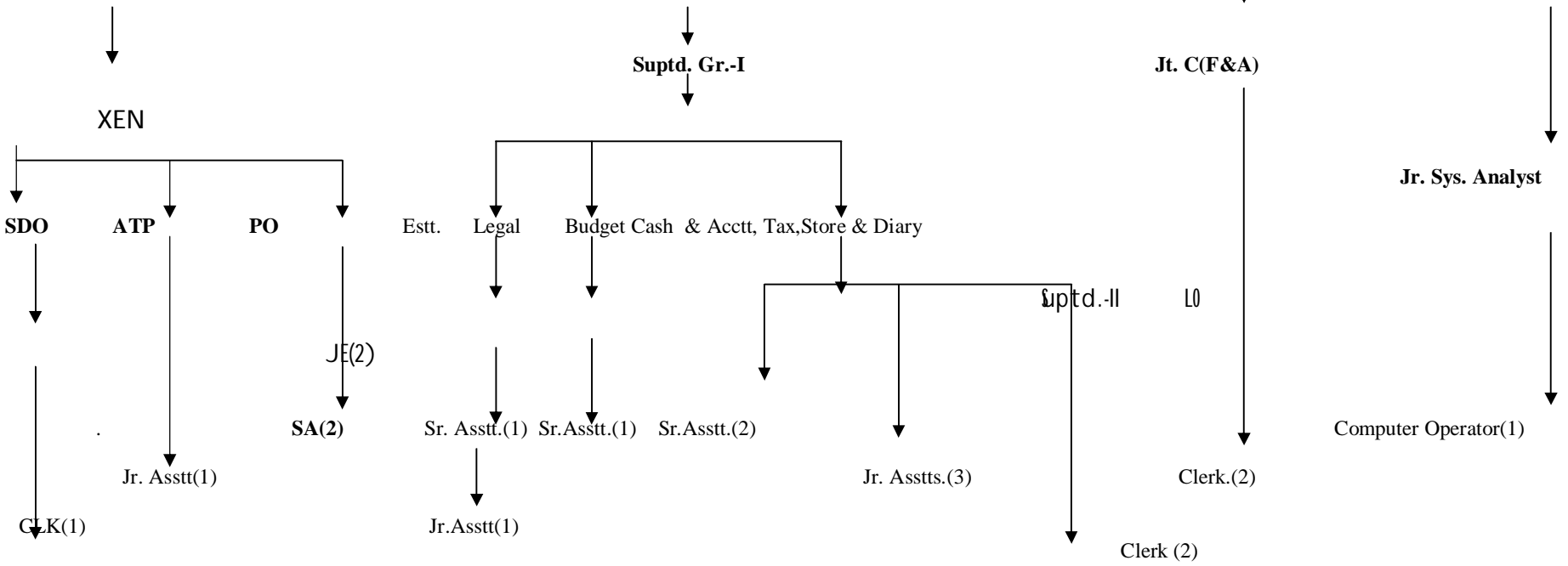


**Technical Wing**

**Administrative Wing**

**Pension Wing**

**Computer Cell**





**RELEASE OF FUNDS UNDER EIUS FOR THE YEAR 2009-10**

(Rs. In lacs)		
SINo	Name of ULB	Amount
1	2	3
1	M.Corp. Shimla	12.00
2	MC Rampur	6.00
3	MC Theog	6.00
4	NP Narkanda	4.00
5	NP Suni	4.00
6	NP Chopal	4.00
7	NP Kotkhai	4.00
8	NP Jubbal	4.00
9	NP Rohroo	4.00
10	MC Solan	6.00
11	MC Nalagarh	6.00
12	MC Parwanoo	6.00
13	NP Arki	4.00
14	NP Baddi	4.00
15	MC Nahan	6.00
16	MC Paonta	6.00
17	NP Rajgarh	4.00
18	MC Mandi	6.00
19	MC Sundernagar	6.00
20	NP Sarkaghat	4.00
21	NP Jogindernagar	4.00
22	NP Rewlsar	4.00
23	MC Bilaspur	6.00
24	MC Naina Devi Ji	6.98
25	NP Ghumarwin	4.00
26	NP Talai	4.00
27	MC Kullu	6.00
28	NP Manali	4.00
29	NPBhuntar	4.00
30	NP Banjar	4.00
31	MC Dharamsala	6.00
32	MC Kangra	6.00
33	MC Palampur	6.00
34	MC Nurpur	6.00
35	NP Dehra	4.00
36	NP Nagrota	4.00
37	NP Jawalamukhi	4.00
38	MC Una	6.00
39	NP Mehatpur	4.00
40	NP Daulatpur	4.00
41	NP Gagret	4.00
42	NP Santokhgarh	4.00

<b>43</b>	<b>MC Hamirpur</b>	<b>6.00</b>
<b>44</b>	<b>NP Nadaun</b>	<b>4.00</b>
<b>45</b>	<b>NP Sujanpur</b>	<b>4.00</b>
<b>46</b>	<b>NP Bhota</b>	<b>4.00</b>
<b>47</b>	<b>MC Chamba</b>	<b>6.00</b>
<b>48</b>	<b>MC Dalhousie</b>	<b>6.00</b>
<b>49</b>	<b>NP Chowari</b>	<b>4.00</b>
	<b>Total</b>	<b>244.98</b>

<b>Integrated Housing and Slum Development Programme (IHSDP)</b>													<b>(Rs. In lacs)</b>		
Sr. No.	Name of Component	Dwelling Units	Project Cost	Year 2007-08			Year 2008-09			Year 2009-10			Total		
				Central Sahre	State Share	Total	Central Sahre	State Share	Total	Central Share	State Share	Total	Central Share	State Share	Total
1	IHSDP Project at Hamirpur	152	443.32	0.00	0.00	0.00	170.60	18.96	189.56	0.00	0.00	0.00	<b>170.60</b>	<b>18.96</b>	<b>189.56</b>
2	IHSDP Project at Dharamshala	328	942.31	0.00	0.00	0.00	308.14	34.24	342.38	0.00	0.00	0.00	<b>308.14</b>	<b>34.24</b>	<b>342.38</b>
3	IHSDP Project at Solan	336	958.3	0.00	0.00	0.00	330.77	36.75	367.52	0.00	0.00	0.00	<b>330.77</b>	<b>36.75</b>	<b>367.52</b>
4	IHSDP Project at Parwanoo	192	1167.98	0.00	0.00	0.00	0.00	0.00	0.00	411.11	148.88	559.99	<b>411.11</b>	<b>148.88</b>	<b>559.99</b>
5	IHSDP Project at Baddi	480	1475.39	0.00	0.00	0.00	0.00	0.00	0.00	445.42	232.28	677.70	<b>445.42</b>	<b>232.28</b>	<b>677.70</b>
6	IHSDP Project at Nalagarh	128	546.59	0.00	0.00	0.00	0.00	0.00	0.00	187.69	69.60	257.29	<b>187.69</b>	<b>69.60</b>	<b>257.29</b>
	<b>Total</b>	<b>1616</b>	<b>5533.89</b>	<b>0.00</b>	<b>0.00</b>	<b>0.00</b>	<b>809.51</b>	<b>89.95</b>	<b>899.46</b>	<b>1044.22</b>	<b>450.76</b>	<b>1494.98</b>	<b>1853.73</b>	<b>540.71</b>	<b>2394.44</b>

<b>Basic services to the Urban Poor (BSUP) Under JNNURM</b> (Rs. In lacs)														
Sr. No.	Name of Component	Project Cost	Year 2007-08			Year 2008-09			Year 2009-10			Total		
			Central Sahre	State Share	Total	Central Sahre	State Share	Total	Central Share	State Share	Total	Central Share	State Share	Total
1	Ashiana-I (252 Flats) a Housing Scheme for the Poor of Shimla town.	999.07	176.36	22.04	198.40	0.00	0.00	0.00	0.00	0.00	0.00	176.36	88.98*	265.34
2	Ashiana-II (384 Flats) a Housing Scheme for the Poor of Shimla town .	1401.48	0.00	0.00	0.00	280.29	0.00	280.29	0.00	0.00	0.00	280.29	35.04**	315.34
	<b>Total</b>	<b>2400.55</b>	<b>176.36</b>	<b>22.04</b>	<b>198.40</b>	<b>280.29</b>	<b>0.00</b>	<b>280.29</b>	<b>0.00</b>	<b>0.00</b>	<b>0.00</b>	<b>456.65</b>	<b>124.02</b>	<b>580.68</b>
* Total of Rs.22.04 lacs was released, however, HIMUDA adjusted Rs.66.94 lacs out of Rs.292.88 lacs (advance state share)														
** HIMUDA adjusted Rs.35.04 lacs out of Rs.292.88 lacs (advance state share)														

Contd-

Urban Infrastructure & Governance (UIG) Under JNNURM (Rs. In lacs)														
Sr. No.	Name of Component	Project Cost	Year 2007-08			Year 2008-09			Year 2009-10			Total		
			Central Sahre	State Share	Total	Central Sahre	State Share	Total	Central Share	State Share	Total	Central Share	State Share	Total
1	Widening and lowering of existing tunnel near Auckland House School, Shimla	1009.06	40.36	5.05	45.41	0.00	0.00	0.00	363.26	0.00	363.26	403.62	100.91*	504.53
2	Setting up of Solid Waste Management Improvement of Shimla city.	1604.00	64.16	8.02	72.18	0.00	0.00	0.00	256.64	0.00	256.64	320.80	351.81**	672.61
3	Purchase of buses for Shimla town	675.00	0.00	0.00	0.00	0.00	67.50	67.50	304.00	0.00	304.00	304.00	67.50	371.50
4	Rehabilitation of water supply distribution system for Shimla city.	7236.00	0.00	0.00	0.00	0.00	0.00	0.00	1447.20	144.72	1591.92	1447.20	144.72	1591.92

5	Rejuvenation of Sewerage Network in missing lines and left out areas / worn out sewerage in various zones of Shimla	5474.00	0.00	0.00	0.00	0.00	0.00	0.00	970.00	263.10	1233.10	970.00	263.10	1233.10
<b>Total</b>		<b>15998.06</b>	<b>104.52</b>	<b>13.07</b>	<b>117.59</b>	<b>0.00</b>	<b>67.50</b>	<b>67.50</b>	<b>3341.10</b>	<b>407.82</b>	<b>3748.92</b>	<b>3445.62</b>	<b>928.04</b>	<b>4373.66</b>
* Total of Rs.5.05 lacs was released, however, HIMUDA adjusted Rs.95.86 lacs out of Rs.292.88 lacs (advance state share)														
** Total of Rs.8.02 lacs was released, however, HIMUDA adjusted Rs.152.38 lacs out of Rs.292.88 lacs (advance state share)														

**FUNDS RELEASED UNDER THE SCHEME MAINTENANCE OF ULBs ROADS FOR THE YEAR 2009-10.**

<b>Sr. No</b>	<b>Name of ULBs</b>	<b>Total</b>
1	Municipal Corporation, Shimla	12755590
2	Municipal Council, Rampur	266265
3	Municipal Council Theog	383842
4	Nagar Panchayat Chopal	639412
5	Nagar Panchayat Jubbal	346189
6	Nagar Panchayat Kotkhai	560837
7	Nagar Panchayat Sunni	188990
8	Nagar Panchayat Narkanda	167911
9	Municipal Council Rohroo	194545
10	Municipal Council, Solan	1336716
11	Municipal Council, Nalagarh	978767
12	Municipal Council, Parwanoo	1252524
13	Nagar Panchayat Arki	352671
14	Municipal Council Baddi	605597
15	Municipal Council, Nahan	1227550
16	Municipal Council, Paonta	745299
17	Nagar Panchayat Rajgarh	234594
18	Municipal Council Bilaspur	466357
19	Municipal Council, Sri Naina Devi	415539
20	Municipal Council Ghumarwin	1149705
21	Nagar Panchayat Talai	796703
22	Municipal Council, Una	2208761
23	Nagar Panchayat Gagret	209993
24	Nagar Panchayat Daulatpur	398332
25	Nagar Panchayat Mehatpur	806324
26	Nagar Panchayat Santokgarh	1308548
27	Municipal Council, Hamirpur	1665247
28	Nagar Panchayat Nadaun	582154
29	Nagar Panchayat Sujanpur	1679035
30	Nagar Panchayat Bhota	168089
31	Municipal Council, Dharamsala	4211270
32	Municipal Council, Kangra	1220741
33	Municipal Council, Palampur	284766
34	Municipal Council, Nurpur	1278456

35	Nagar Panchayat Dehra	282857
36	Nagar Panchayat Jawalamukhi	974087
37	Municipal Council Nagrota	319204
38	Municipal Council,Chamba	1127870
39	Municipal Council,Dalhousie	2073978
40	Nagar Panchayat Chowari	615179
41	Municipal Council,Mandi	1524029
42	Municipal Council,Sundernagar	3043491
43	Nagar Panchayat Sarkaghat	5872184
44	Nagar Panchayat Jogindernagar	864551
45	Nagar Panchayat Rewalsar	272099
46	Municipal Council,Kullu	903143
47	Municipal Council Manali	621158
48	Nagar Panchayat Bhuntar	299928
49	Nagar Panchayat Banjar	118923
<b>Total:-</b>		<b>60000000</b>

### Release of funds under SFC Grant (Non-Plan) for the year 2009-10

Sr. No	NAME OF THE URBAN LOCAL BODIES	POPULATION AS PER 2001 CENSUS.	Provision for Exp. For the performance of Statutory and delegated functions.	Provison for Exp. On maintenance of Assets.	Provision for the payment of Honorarium to the elected representatives.	Total
<b>A. Municipal Corporaiton.</b>						
1	M.Corpn. Shimla.	142555	82617481	15275960	814559	98708000
	Grant for newly merged area.					30000000
<b>Total:-</b>		<b>142555</b>	<b>82617481</b>	<b>15275960</b>	<b>814559</b>	<b>128708000</b>
<b>B. Municipal Councils:</b>						
1	Municipal Council ,Nurpur	9066	5254183	971498	51813	6277494
2	Municipal Council, Kullu	18306	10609208	1961641	104314	12675163
3	Municipal Council, Palampur	4006	2321670	429276	22895	2773841
4	Municipal Council, Rampur	5653	3276185	605766	32308	3914259
5	Municipal Council, Theog	3754	2175624	402272	21455	2599351
6	Municipal Council,Bilaspur	13058	7567739	1399274	74628	9041641
7	Municipal Council,Chamba	20327	11780474	2178208	116171	14074853
8	Municipal Council,Dalhousie	7425	4303145	795651	42435	5141231
9	Municipal Council,Dharamshala	19124	11083278	2049296	109296	13241870
10	Municipal Council,Hamirpur	17252	9998364	1848696	98597	11945657
11	Municipal Council,Kangra	9156	5306343	981142	52328	6339813
12	Municipal Council,Mandi	26873	15574196	2879667	153582	18607445
13	Municipal Council,Nahan	26053	15098967	2791797	148896	18039660
14	Municipal Council,Nainadevi ji	1161	672855	124411	6635	803901

15	Municipal Council,Nalagarh	9443	5472673	1011896	53968	6538537
16	Municipal Council,Paonta	19090	11063573	2045653	109101	13218327
17	Municipal Council,Parwanoo	8609	4989330	922526	49201	5961057
18	Municipal Council,Solan	34206	19824023	3665459	195491	23684973
19	Municipal Council,Sundernagar	23986	13901041	2570300	137083	16608424
20	Municipal Council,Una	15900	9214815	1703818	90870	11009503
Total:-		292448	169487686	31338247	1671067	202497000
<b>C. Nagar Panchayats</b>						
1	Nagar Panchayat, Baddi	22601	13098367	2421883	129167	15649417
2	Nagar Panchayat, Banjar	1262	731390	135234	7678	874302
3	Nagar Panchayat, Bhota	1472	853095	157737	8413	1019245
4	Nagar Panchayat, Dehra	4336	2512921	464639	24781	3002341
5	Nagar Panchayat, Gagret	3181	1843543	340871	18180	2202594
6	Nagar Panchayat, Jawalamkuhi	4931	2857752	528398	28181	3414331
7	Nagar Panchayat, Mehatpur	8681	5031057	930242	49613	6010912
8	Nagar Panchayat, Narkanda	713	413218	76404	4075	493697
9	Nagar Panchayat, Rajgarh	2527	1464518	270789	14442	1749749
10	Nagar Panchayat, Rewalsar	1369	793401	146700	7824	947925
11	Nagar Panchayat, Santokgarh	8308	4814886	890272	47481	5752639
12	Nagar Panchayat, Sarkaghat	3706	2147805	397129	21180	2566114
13	Nagar Panchayat, Sujampur	7077	4101462	758360	40446	4900268
14	Nagar Panchayat, Suni	1529	886129	163845	8738	1058712
15	Nagar Panchayat, Talai	2011	1165471	215495	11493	1392459
16	Nagar Panchayat,Arki	2877	1667360	308295	16442	1992097
17	Nagar Panchayat,Bhunter	4260	2468875	456495	24346	2949716
18	Nagar Panchayat,Chopal	1507	873379	161488	8613	1043480
19	Nagar Panchayat,Chowari	3016	1747917	323190	17237	2088344

20	Nagar Panchayat,Daulatpur	3354	1943804	359409	19168	2322381
21	Nagar Panchayat,Ghumarwin	5721	3315595	613053	32696	3961344
22	Nagar Panchayat,Jogindernagar	5048	2925559	540935	28850	3495344
23	Nagar Panchayat,Jubbal	1346	780072	144235	7693	932000
24	Nagar Panchayat,Kotkhai	1149	665901	123125	6567	795593
25	Nagar Panchayat,Manali	6265	3630869	671347	35805	4338021
26	Nagar Panchayat,Nadaun	4405	2552909	472033	25175	3050117
27	Nagar Panchayat,Nagrota	5657	3278504	606195	32330	3917029
28	Nagar Panchayat,Rohroo	6607	3829074	707995	37760	4574829
Total:-		124916	72394833	13385793	714374	86495000
Grand Total:-		559919	324500000	60000000	3200000	417700000

### Minority Popoulation as per 15 PP

Sr. No.	Name of ULBs	Muslim	Christian	Sikh	Buddhist	Other religions and persuasions.	Total
<b>Municipal Councils</b>							
1	M.Corp. Shimla	2902	870	3791	1991	13	9567
<b>Total:-</b>		<b>2902</b>	<b>870</b>	<b>3791</b>	<b>1991</b>	<b>13</b>	<b>9567</b>
<b>Municipal Councils</b>							
1	MC Rampur	85	8	38	96	0	227
2	MC Theog	15	6	28	18	0	67
3	MC Solan	912	190	1010	236	0	2348
4	MC Nalagarh	829	13	472	31	0	1345
5	MC Parwanoo	243	35	231	10	0	519
6	MC Nahan	3404	83	1153	22	0	4662
7	MC Paonta Sahib	1006	55	3328	27	0	4416
8	MC Bilaspur	1148	9	164	20	0	1341
9	MC Naina Devi	0	0	2	0	0	2
10	MC Mandi	509	25	1830	134	2	2500
11	MC Sundarnagar	616	62	735	150	0	1563
12	MC Kullu	208	148	319	1400	1	2076
13	MC Una	169	47	1417	53	0	1686
14	MC Hamirpur	181	21	103	31	0	336

15	MC Dharmsala	120	71	323	4501	4	5019
16	MC Kangra	25	154	100	10	0	289
17	MC Palampur	43	98	122	10	0	273
18	MC Nurpur	38	3	59	2	0	102
19	MC Chamba	834	460	600	40	0	1934
20	MC Dalhousie	128	104	736	1029	5	2002
<b>Total:-</b>		<b>10513</b>	<b>1592</b>	<b>12770</b>	<b>7820</b>	<b>12</b>	<b>32707</b>
<b>Nagar Panchayats</b>							
1	NP Narkanda	8	0	3	34	0	45
2	NP Seoni	68	1	28	0	0	97
3	NP Chaupal	14	0	2	4	0	20
4	NP Kotkhai	2	3	1	16	0	22
5	NP Jubbal	15	0	15	9	0	39
6	NP Rohru	222	36	42	54	10	364
7	Arki	167	4	13	1	0	185
8	NP Baddi	568	39	245	5	3	860
9	NP Rajgarh	55	0	43	4	0	102
10	NP Ghumarwin	291	2	113	36	4	446
11	NP Talai	51	1	26	0	0	78
12	NP Sarkaghat	178	4	11	1	0	194
13	NP Jogindarnagar	76	7	72	3	0	158
14	NP Rawalsar	4	0	16	208	0	228
15	NP Manali	138	107	72	1519	7	1843
16	NP Bhuntar	70	19	242	196	0	527
17	NP Banjar	1	0	4	4	0	9
18	NP Mehatpur	102	11	837	7	0	957

19	NP Daulatpur	10	0	28	2	6	46
20	NP Gagret	13	2	39	3	3	60
21	NP Santokhgarh	272	1	928	6	0	1207
22	NP Nadaun	98	0	28	6	0	132
23	NP Sujanpur	154	3	53	11	0	221
24	NP Bhota	25	0	0	0	0	25
25	NP Dehra	22	9	10	4	0	45
26	NP Nagrota Bagwan	50	17	41	0	1	109
27	NP Jawalamukhi	141	11	25	11	0	188
28	NP Chawari	153	6	9	1	0	169
<b>Total:-</b>		<b>2968</b>	<b>283</b>	<b>2946</b>	<b>2145</b>	<b>34</b>	<b>8376</b>
<b>Grand Total:-</b>		<b>16383</b>	<b>2745</b>	<b>19507</b>	<b>11956</b>	<b>59</b>	<b>50650</b>

RELEASE OF FUNDS UNDER RAIN DAMAGE DURING THE YEAR 2009-10		
Sr. No.	Name of ULB	Funds Released
<b>1. DISTRICT SHIMLA</b>		
1	MUNICIPAL CORPORATION, SHIMLA	5000000
2	MUNICIPAL COUNCIL, RAMPUR	164000
3	MUNICIPAL COUNCIL, THEOG	246000
4	NAGAR PANCHAYAT, NARKANDA	88000
5	NAGAR PANCHAYAT, SUNI	67000
6	NAGAR PANCHAYAT, CHOPAL	244000
7	NAGAR PANCHAYAT, KOTKHAI	70000
8	NAGAR PANCHAYAT, JUBBAL	147000
9	MUNICIPAL COUNCIL, ROHROO	260000
<b>2. DISTRICT SOLAN</b>		
10	MUNICIPAL COUNCIL, SOLAN	290000
11	MUNICIPAL COUNCIL, NALAGARH	243000
12	NAGAR PANCHAYAT, PARWANOO	153000
13	NAGAR PANCHAYAT, ARKI	15000
14	NAGAR PANCHAYAT, BADDI	777000
<b>3. DISTRICT SIRMOUR.</b>		
15	MUNICIPAL COUNCIL, NAHAN	355000
16	MUNICIPAL COUNCIL, PAONTA	147000
17	NAGAR PANCHAYAT, RAJGARH	26000
<b>4. DISTRICT BILASPUR.</b>		
18	MUNICIPAL COUNCIL, BILASPUR	472000
19	MUNICIPAL COUNCIL, NAINADEVI JI	26000
20	NAGAR PANCHAYAT, GHUMARWIN	293000
21	NAGAR PANCHAYAT, TALAI	265000
<b>5. DISTRICT UNA</b>		
22	MUNICIPAL COUNCIL, UNA	323000
23	NAGAR PANCHAYAT, GAGRET	73000
24	NAGAR PANCHAYAT, DAULATPUR	82000
25	NAGAR PANCHAYAT, MEHATPUR	111000
26	NAGAR PANCHAYAT, SANTOKGARH	76000
<b>6. DISTRICT HAIMRPUR</b>		
27	MUNICIPAL COUNCIL, HAMIRPUR	469000
28	NAGAR PANCHAYAT, NADAUN	82000
29	NAGAR PANCHAYAT, SUJANPUR	117000
30	NAGAR PANCHAYAT, BHOTTA.	59000
<b>7. DISTRICT KANGRA</b>		
31	MUNICIPAL COUNCIL, DHARAMSHALA	534000
32	MUNICIPAL COUNCIL, KANGRA	311000
33	MUNICIPAL COUNCIL, PALAMPUR	53000
34	MUNICIPAL COUNCIL, NURPUR	605000
35	NAGAR PANCHAYAT, DEHRA	63000
36	MUNICIPAL COUNCIL, NAGROTA	118000
37	NAGAR PANCHAYAT, JAWALAMUKHI.	202000
<b>8. DISTRICT CHAMBA</b>		
38	MUNICIPAL COUNCIL, CHAMBA	153000
39	MUNICIPAL COUNCIL, DALHOUSIE	135000
40	NAGAR PANCHAYAT, CHOWARI	157000
<b>9. DISTRICT MANDI</b>		
41	MUNICIPAL COUNCIL, MANDI	293000
42	MUNICIPAL COUNCIL, SUNDERNAGAR	339000
43	NAGAR PANCHAYAT, SARKAGHAT	397000

44	NAGAR PANCHAYAT, JOGINDERNAGAR	117000
45	NAGAR PANCHAYAT, REWALSAR	44000
10. DISTRICT KULLU		
46	MUNICIPAL COUNCIL, KULLU	364000
47	NAGAR PANCHAYAT, MANALI	264000
48	NAGAR PANCHAYAT, BHUNTER	70000
49	NAGAR PANCHAYAT, BANJAR	41000
	<b>Total</b>	<b>15000000</b>